



ANNUAL TESTING PRESENTATION
OCTOBER 10, 2016

Karen A. Chase

Assistant Superintendent of Curriculum and Instruction
School District of the Chathams

Overview of New Jersey State Assessment Program

District Results

Moving Forward

New Jersey's State Assessment Program

Grade Level	New Jersey's Statewide Assessments
Grade 3	PARCC ELA and PARCC Mathematics
Grade 4	PARCC ELA and PARCC Mathematics, NJ ASK Science
Grade 5	PARCC ELA and PARCC Mathematics
Grade 6	PARCC ELA and PARCC Mathematics
Grade 7	PARCC ELA and PARCC Mathematics
Grade 8	PARCC ELA and PARCC Mathematics (Grade 8 or Algebra 1), NJ ASK Science
Grade 9-11	PARCC ELA and either PARCC Algebra 1, Geometry, or Algebra II, End of Course Biology

2016-2017 Assessment Schedule

PARCC Assessments Windows

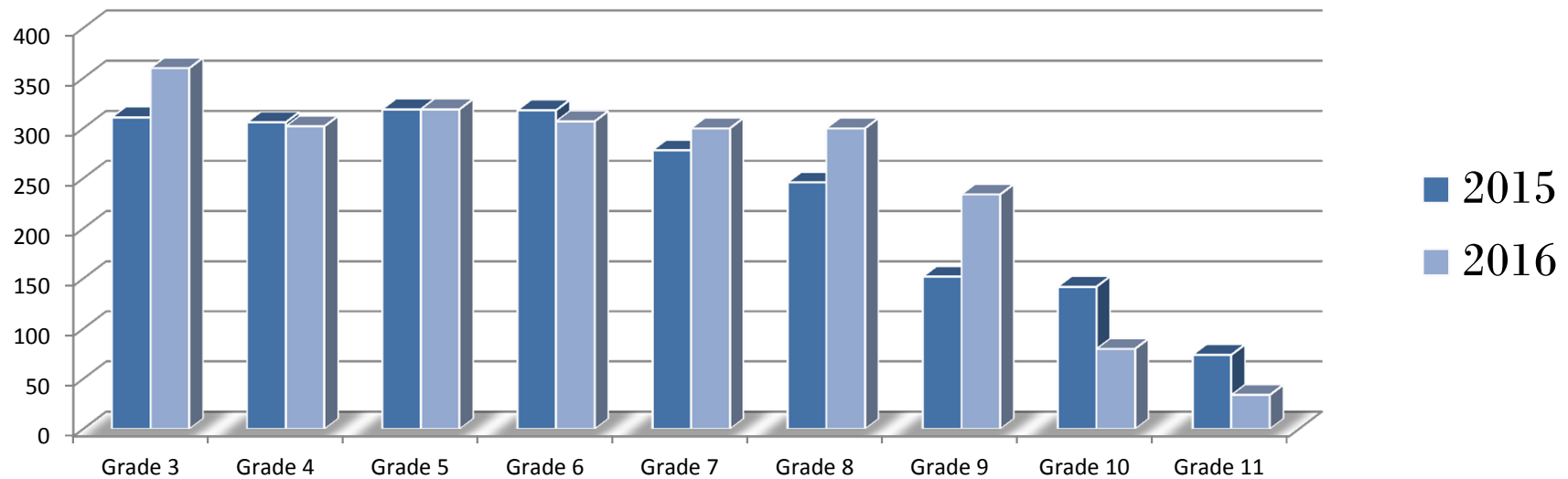
Grades 3 – 8	High School
March 27, 2017 – May 19, 2017	March 27, 2017 – May 19, 2017

Science Assessments

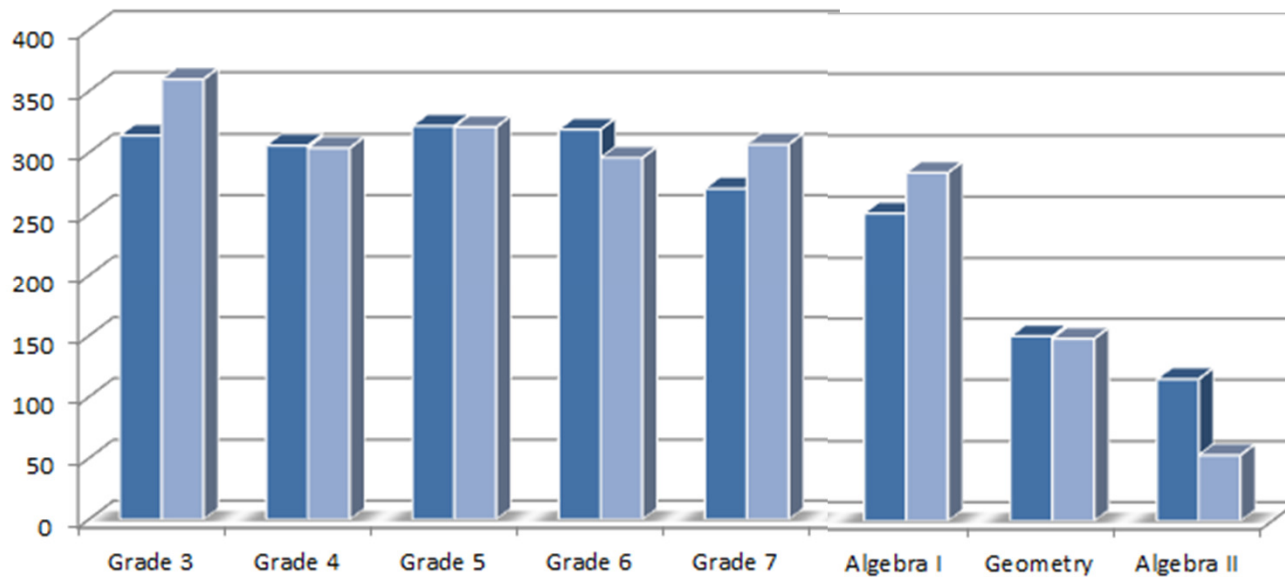
Grade 4 and 8	Biology
May 31, 2017	May 31 – June 1, 2017

***Please check schools' webpages for more information**

Comparison of Valid Test Scores - ELA



Comparison of Valid Test Scores - Mathematics

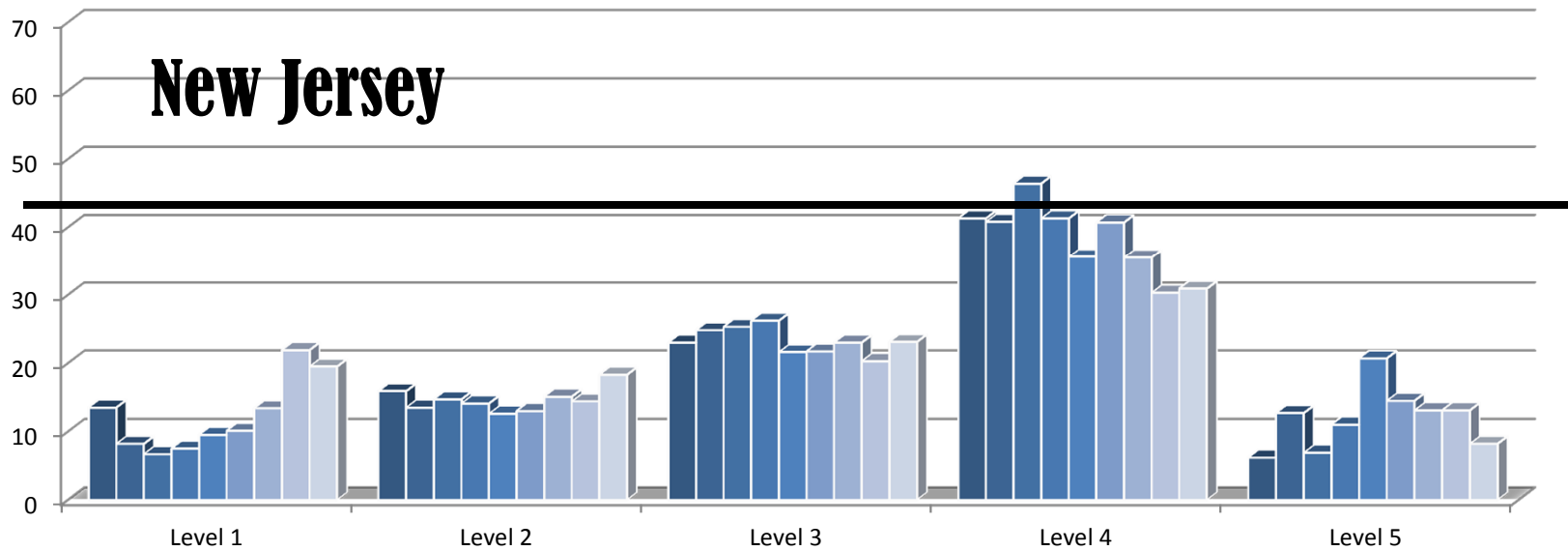
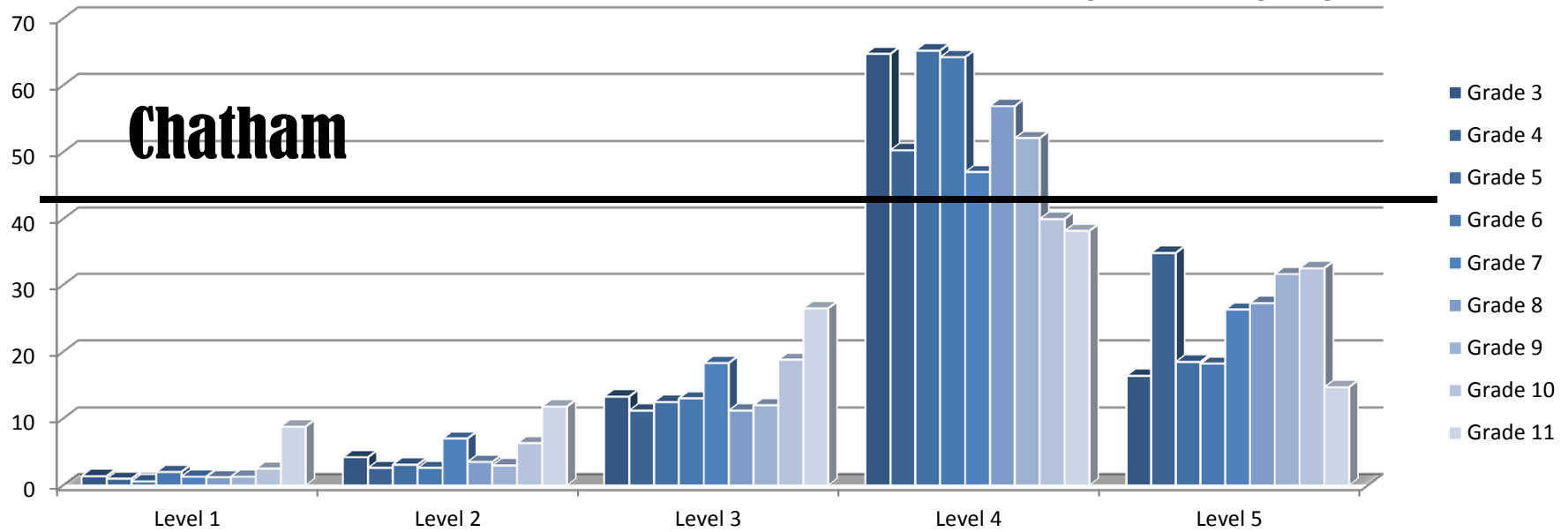


2016 PARCC Grade Level Outcomes

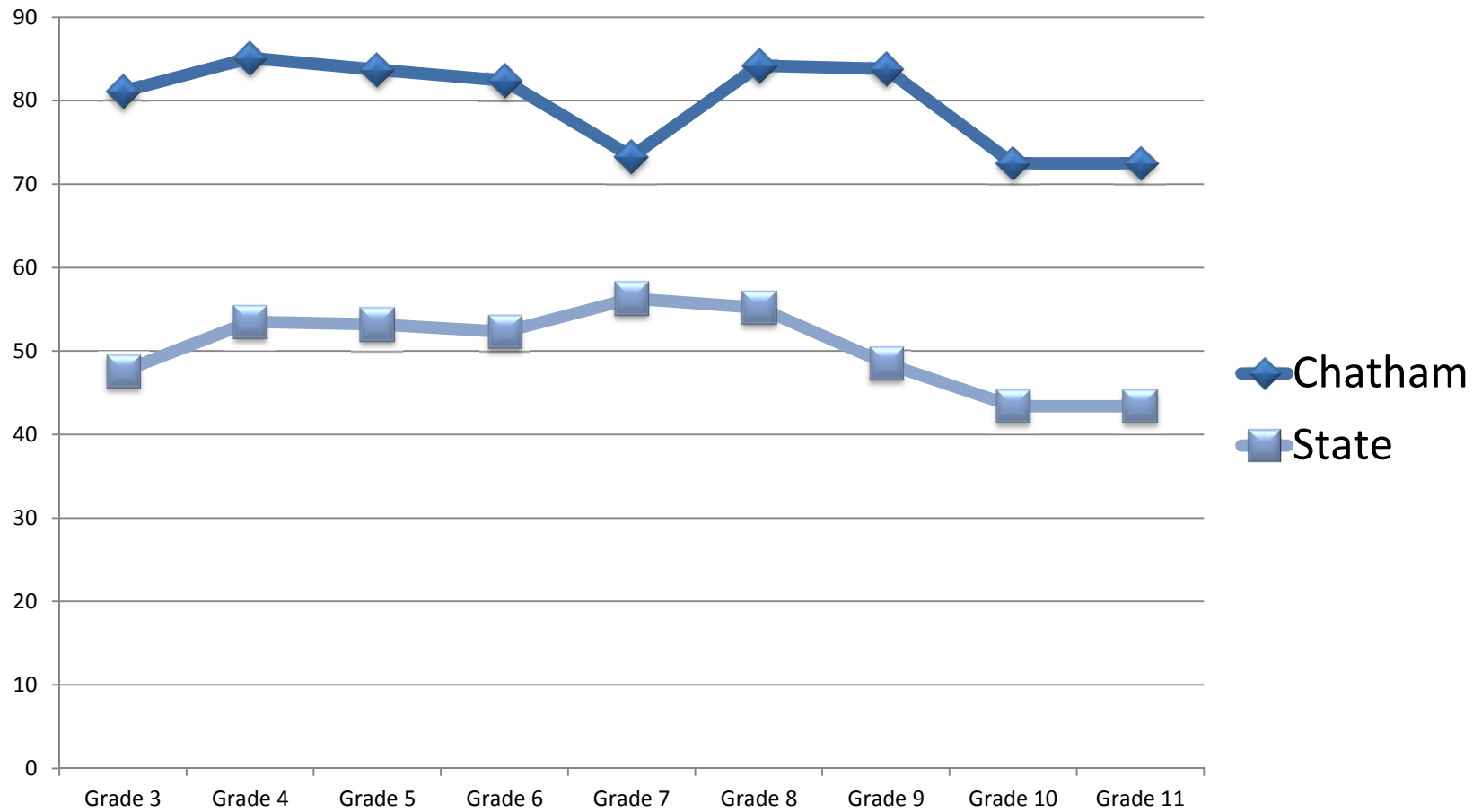
English Language Arts

	Count of Valid Test Scores	% Not Yet Meeting (Level 1)	% Partially Meeting (Level 2)	% Approaching Expectations (Level 3)	% Meeting Expectations (Level 4)	% Exceeding Expectation (Level 5)	District % >= Level 4	NJ % >= Level 4
Grade 3	360	1.4	4.2	13.3	64.7	16.4	81.1	47.6
Grade 4	302	1.0	2.6	11.3	50.3	34.8	85.1	53.5
Grade 5	319	0.6	3.1	12.5	65.2	18.5	83.7	53.2
Grade 6	307	2.0	2.6	13.0	64.2	18.2	82.4	52.3
Grade 7	300	1.3	7.0	18.3	47.0	26.3	73.3	56.3
Grade 8	260	1.2	3.5	11.2	56.9	27.3	84.2	55.2
Grade 9	234	1.3	3.0	12.0	52.1	31.6	83.8	48.5
Grade 10	80	2.5	6.3	18.8	40.0	32.5	72.5	43.4
Grade 11	34	8.8	11.8	26.5	38.2	14.7	52.9	39.1

Comparison District to State – English Language Arts



>Level 4 Met or Exceeds Expectations (English Language Arts)

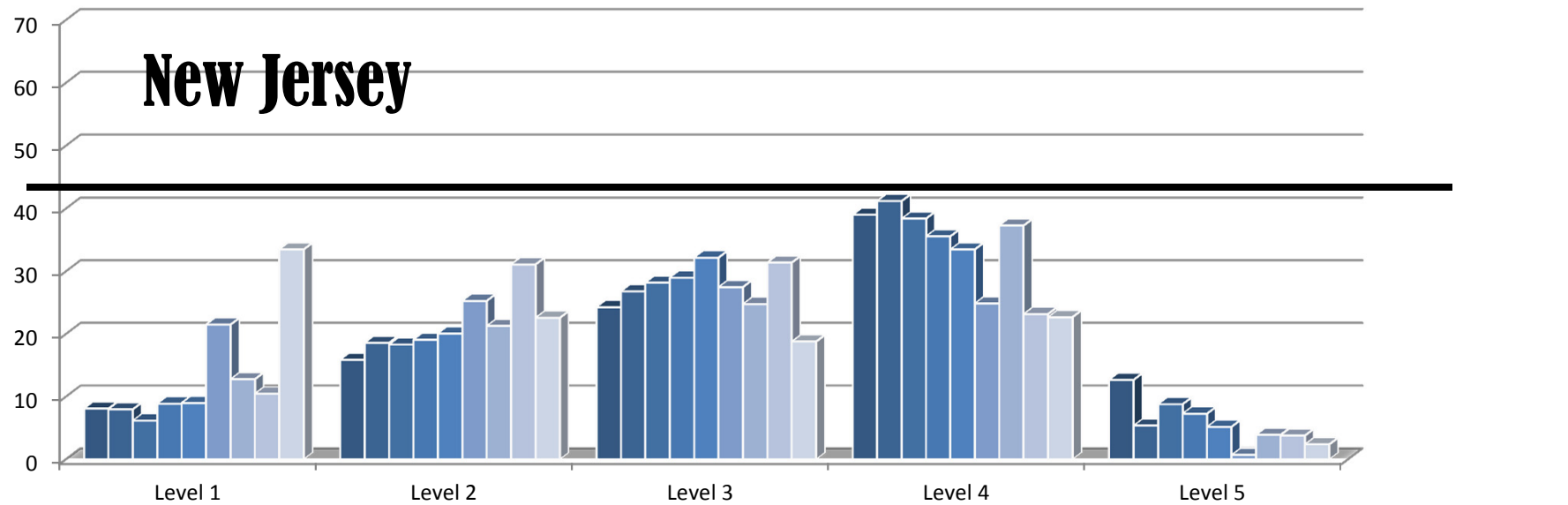
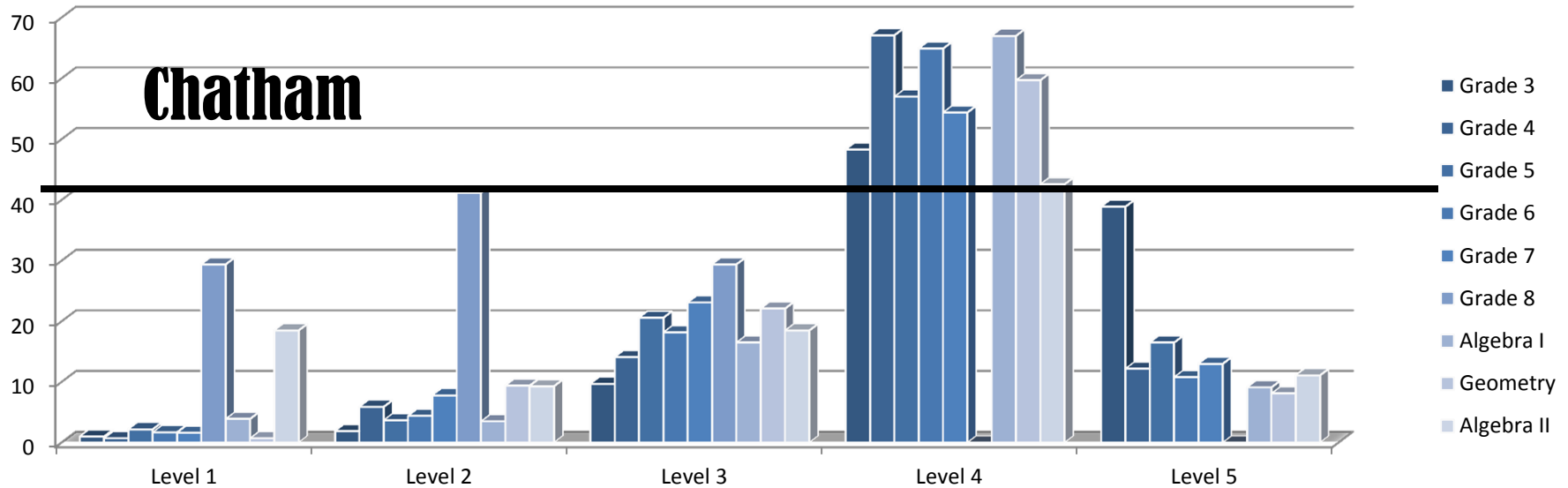


2016 PARCC Grade Level Outcomes

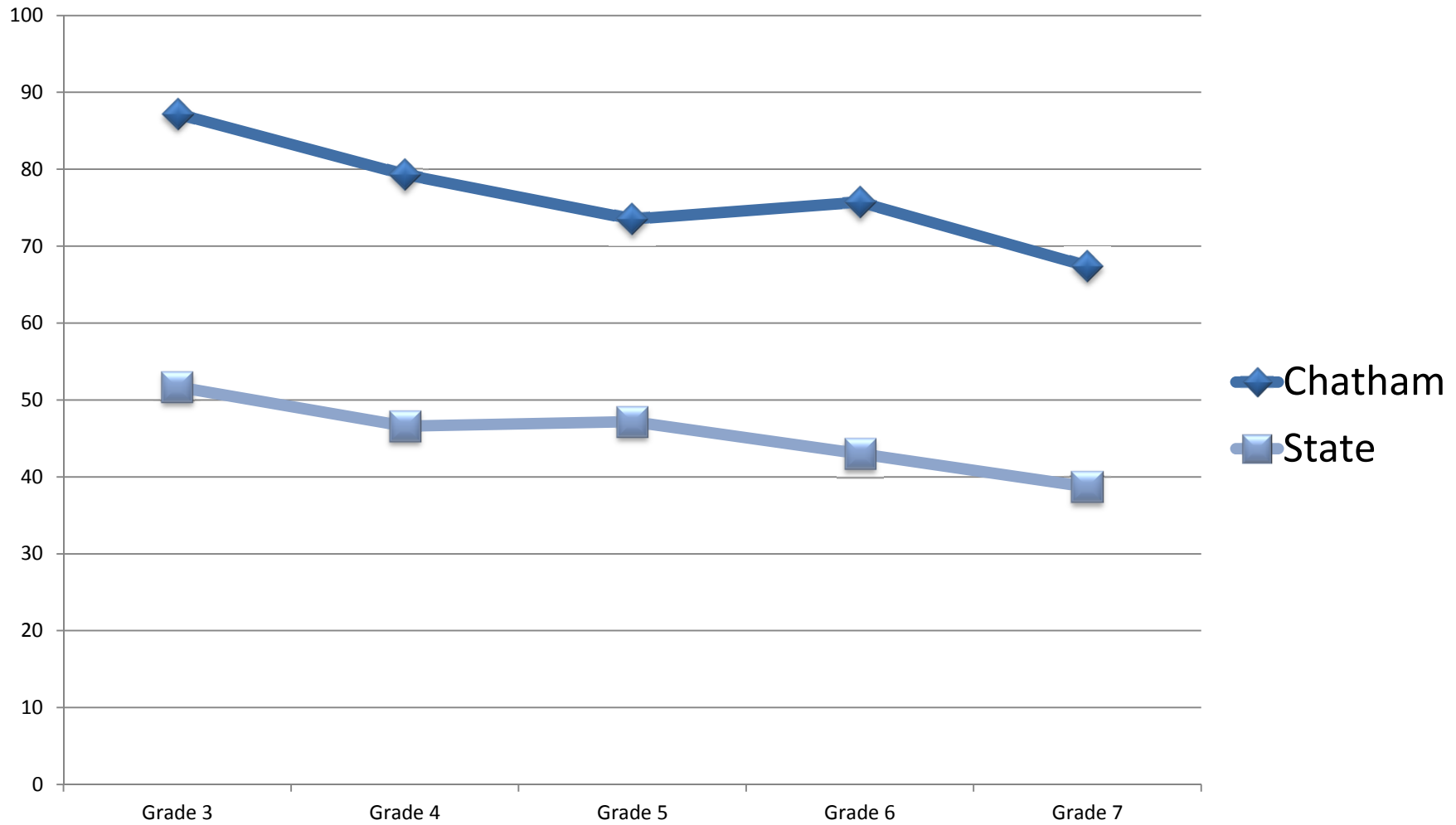
Mathematics

	Count of Valid Test Scores	% Not Yet Meeting (Level 1)	% Partially Meeting (Level 2)	% Approaching Expectations (Level 3)	% Meeting Expectations (Level 4)	% Exceeding Expectation (Level 5)	District % >= Level 4	NJ % >= Level 4
Grade 3	360	1.1	1.9	9.7	48.3	38.9	87.2	51.7
Grade 4	304	0.7	5.9	14.1	67.1	12.2	79.3	46.6
Grade 5	321	2.2	3.7	20.6	57.0	16.5	73.5	47.2
Grade 6	296	1.7	4.4	18.2	64.9	10.8	75.7	43.0
Grade 7	307	1.6	7.8	23.1	54.4	13.0	67.4	38.7
Algebra 1	285	3.9	3.5	16.5	67.0	9.1	76.1	41.2
Geometry	149	0.7	9.4	22.1	59.7	8.1	67.8	27.0
Algebra II	54	18.5	9.3	18.5	42.6	11.1	53.7	25.0

Comparison District to State – Mathematics

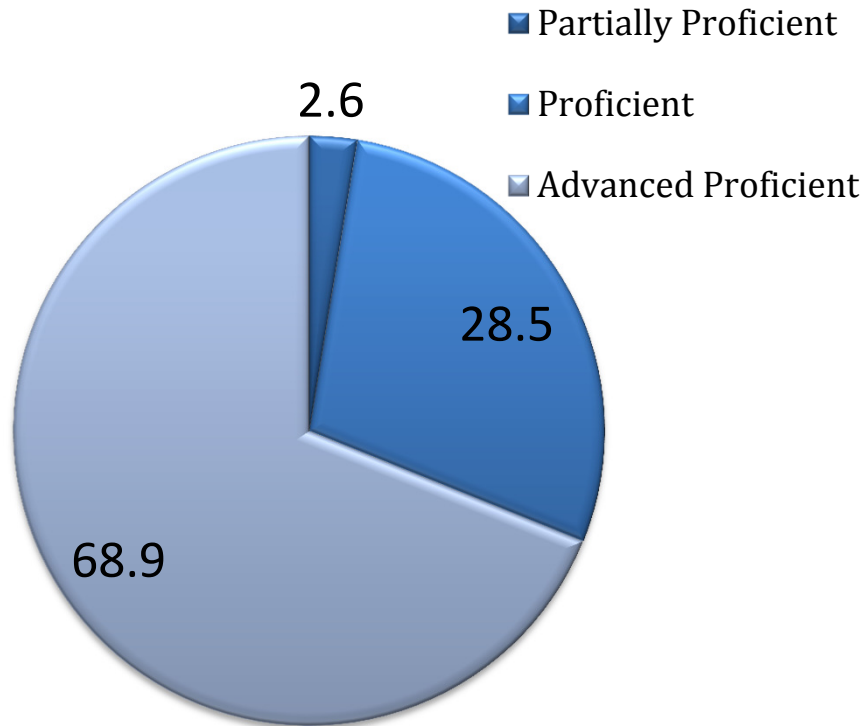


>Level 4 Met or Exceeds Expectations Mathematics

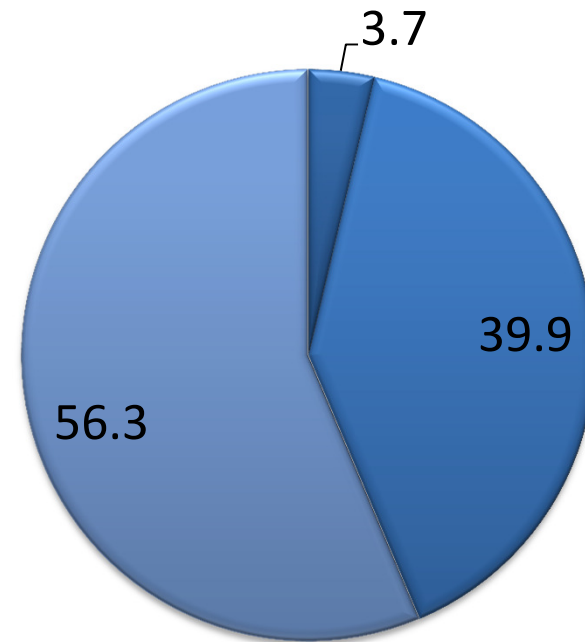


Science Assessments Results

NJ ASK – Grade 4

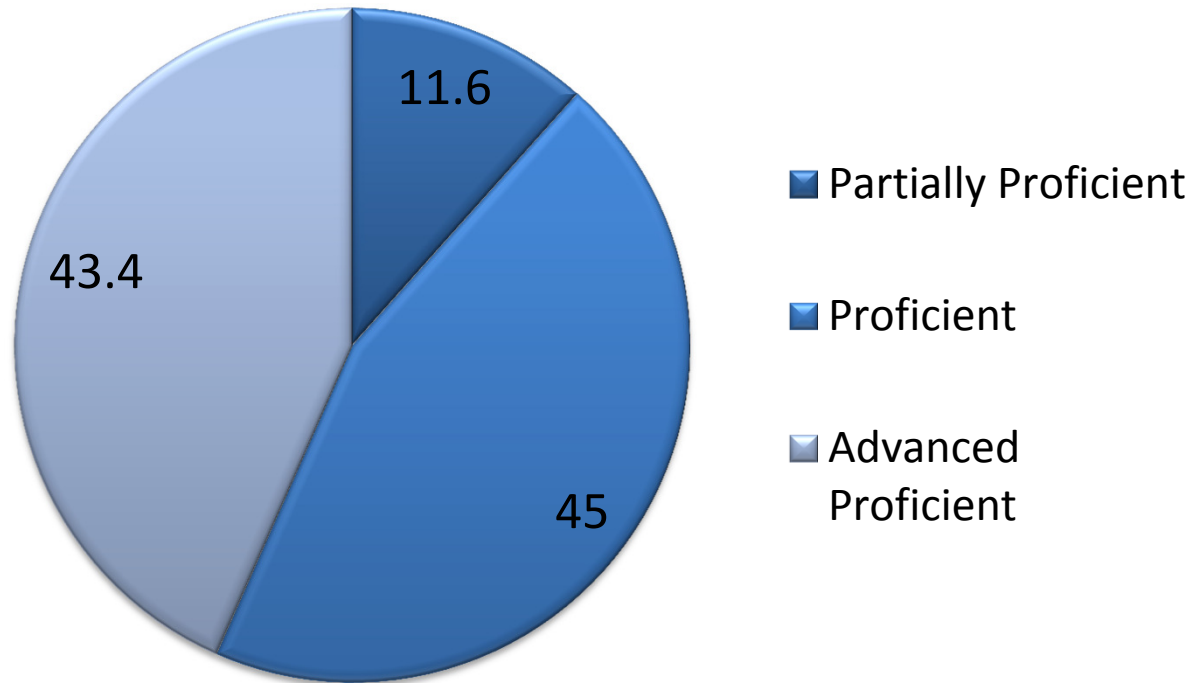


NJ ASK – Grade 8



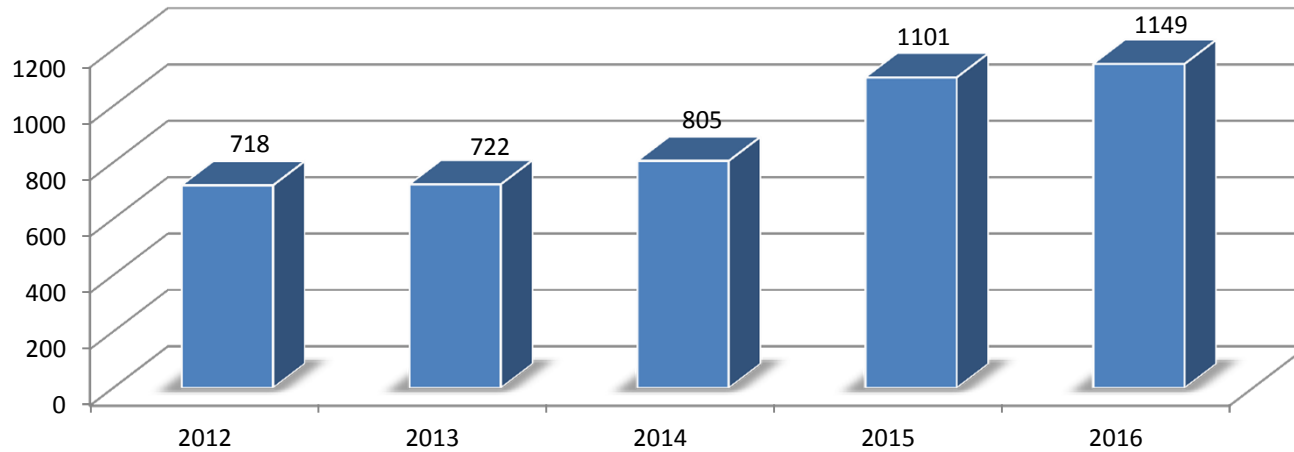
Science Assessments Results

New Jersey Biology Competency Test



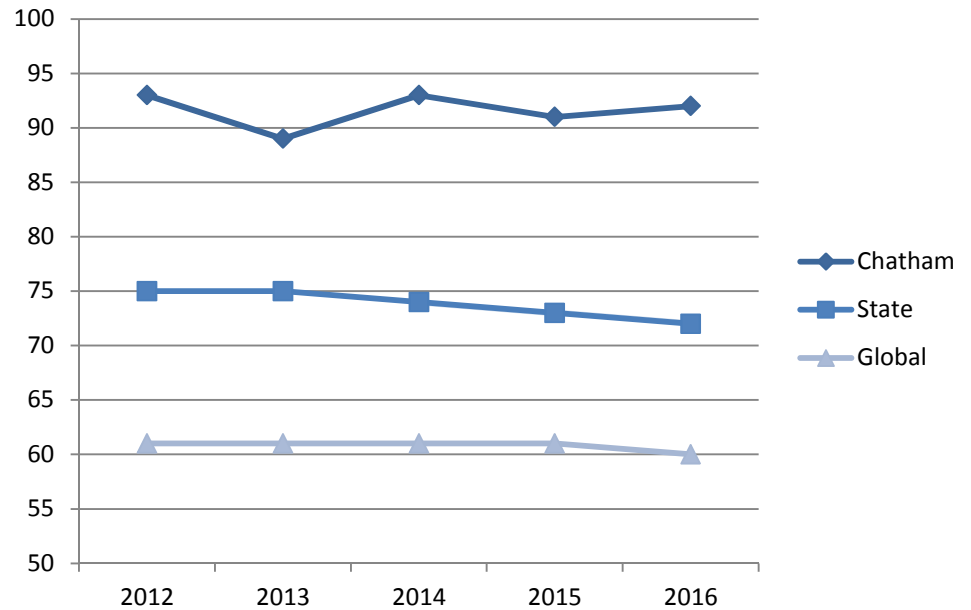
Advanced Placement Five Year Summary

Number of Subject Tests Taken



% Students with 3 or Above

Chatham-State-Global



Graduation Requirements

	English Language Arts	Mathematics
Class of 2017 Class of 2018 Class of 2019	<ul style="list-style-type: none"> ▪ Grade 9, 10, or 11 PARCC ▪ Substitute Competency Assessment (passing score) ▪ NJDOE Portfolio Appeal 	<ul style="list-style-type: none"> ▪ Algebra I, Geometry, or Algebra II PARCC ▪ Substitute Competency Assessment (passing score) ▪ NJDOE Portfolio Appeal
Class of 2020	<ul style="list-style-type: none"> ▪ (Must Take) Grade 9, 10, or 11 PARCC ▪ Substitute Competency Assessment (passing score) ▪ NJDOE Portfolio Appeal 	<ul style="list-style-type: none"> ▪ (Must Take) Algebra I, Geometry, or Algebra II PARCC ▪ Substitute Competency Assessment (passing score) ▪ NJDOE Portfolio Appeal
Class of 2021 and Beyond	<ul style="list-style-type: none"> ▪ (Must Take) Grade 9 and 11 PARCC ▪ (Must Pass) Grade 10 PARCC ▪ NJDOE Portfolio Appeal 	<ul style="list-style-type: none"> ▪ (Must Pass) Algebra I PARCC ▪ (Must Take) Geometry and Algebra II PARCC ▪ NJDOE Portfolio Appeal

Sources:

- <http://www.state.nj.us/education/assessment/parents/GradReq.pdf>
- <http://www.state.nj.us/education/assessment/grad/>

Resources

Information on the new 2015-16 PARCC Student Reports

[www.state.nj.us/ education/assessment/parcc/scores/](http://www.state.nj.us/education/assessment/parcc/scores/)

Understanding the Student Score Reports (with translations)

understandthescore.org/

